

Laptop Cart

CHA4-3-B

Height adjustable cart with work surface, laptop protector up to 17" and mouse pad



Ergonomic
Simple, light weight,
easy to use



Easy to clean
Clean surfaces with
minimal dirt traps



Multi purpose
Customise with
accessories



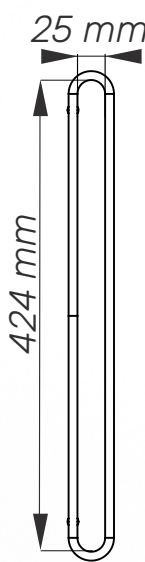
Durable
Lifetime warranty



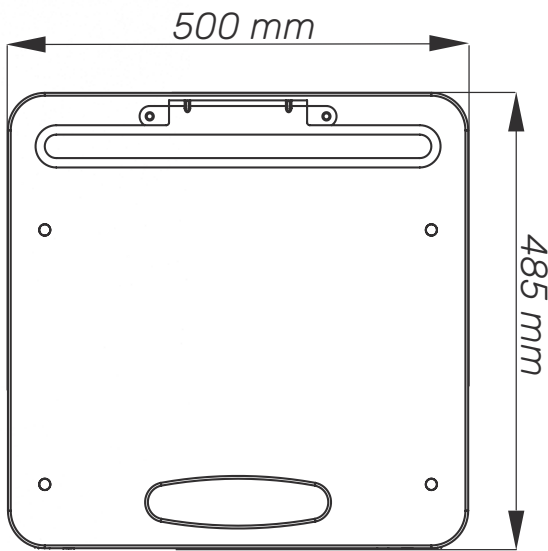
Quick setup
Supplied fully
assembled



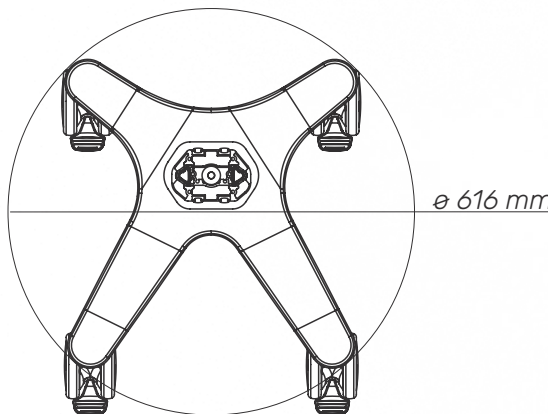
TECHNICAL DATA



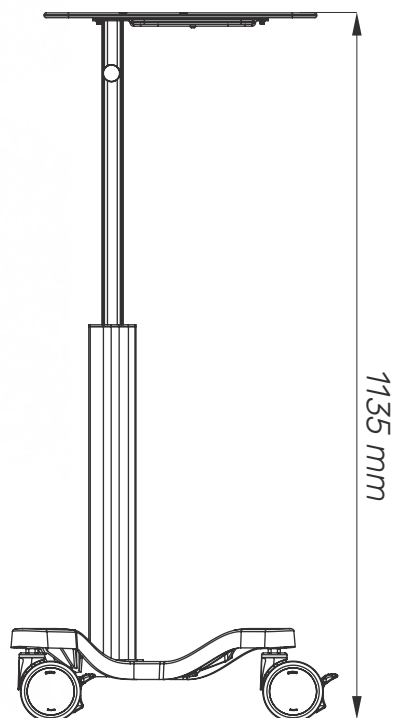
Laptop protector



Work surface



Base



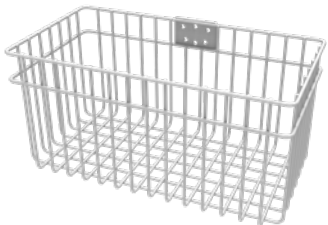
Side

PURPOSE DESIGNED

Designed for laptop mounting.

The cart can be your perfect choice for laptop use. We added a left or right handed mouse pad and a power supply holder under the work surface. The work surface has a handle for moving the cart.

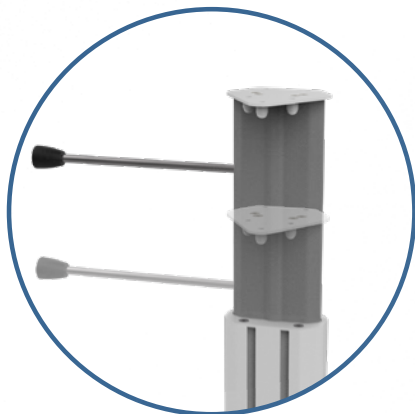
ACCESSORIES



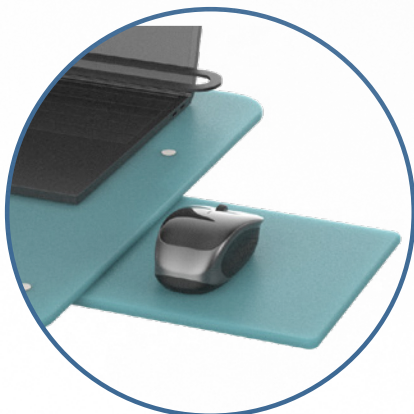
ST2
Metal basket



Rubber
inserts



Worktop for device
and handle



Mouse pad



Power supply holder and
Laptop protection up to 17"

Mechanical data	
Wheelbase dimension	616 mm (diameter)
Worktop	Width: 500 mm Height: 485 mm
Wheels/locking	2 lockable, 100 mm diameter
Loading capacity	25 kg
Construction	
Main material	Aluminium, PMMA
Color	
White (RAL 9016)	
Certificates	
Certificates conforms to	IEC60601-1:2012 (Edition 3)
CE	Rohs compliant